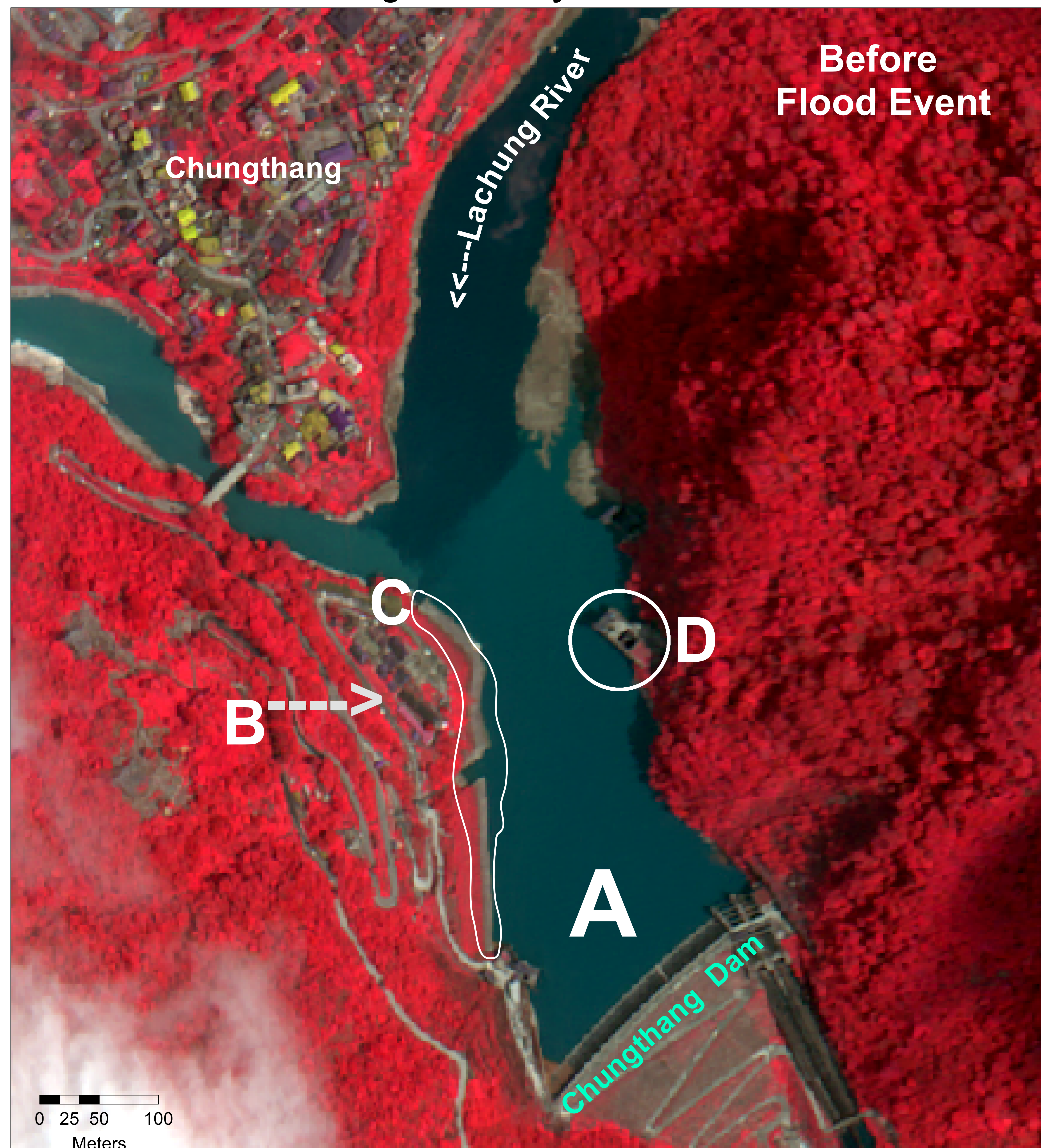


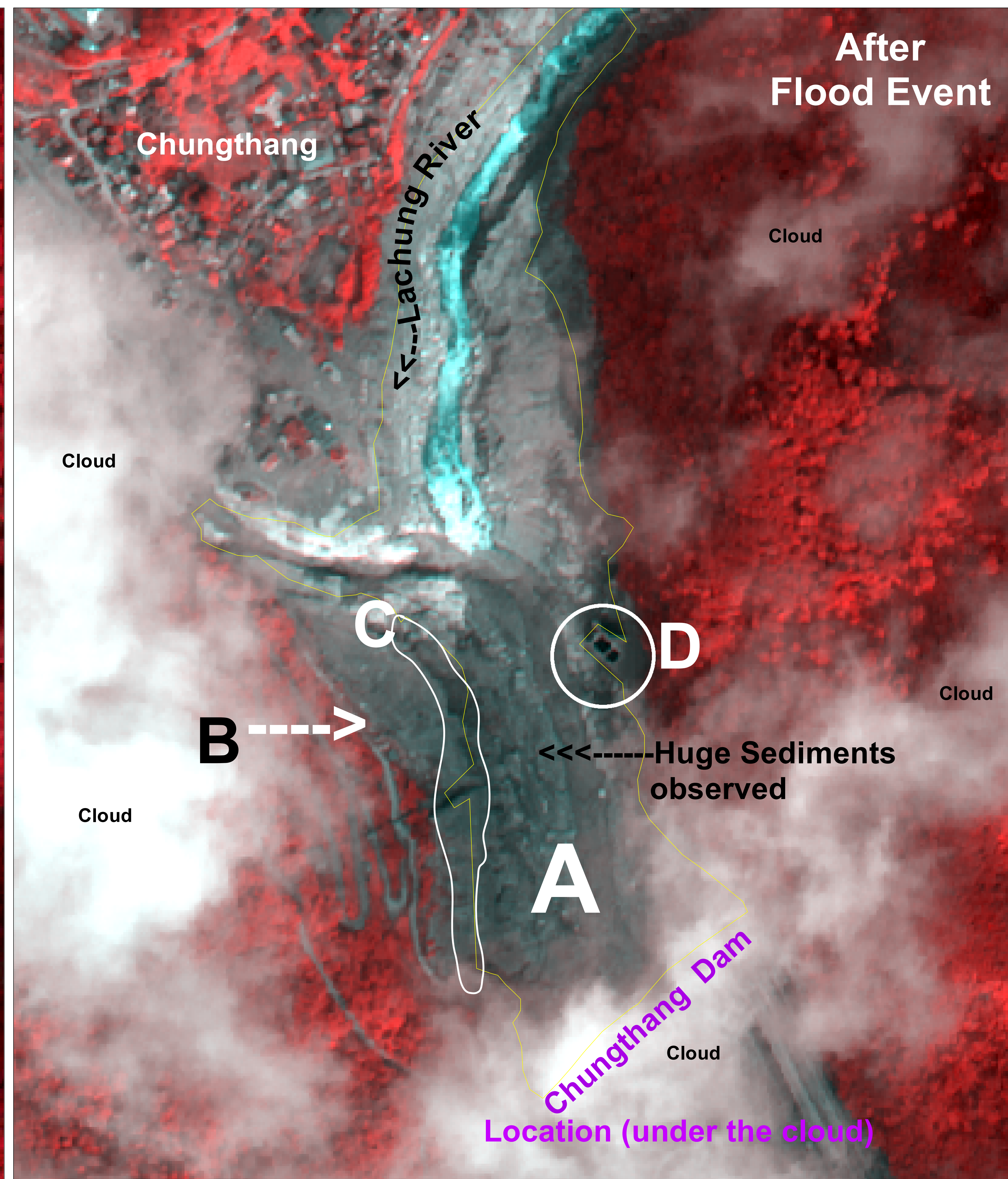
# Chungthang Dam and Surroundings

Upstream of Chungthang Dam

Cartosat-2E Satellite Image of 10 May 2023



Cartosat-2E Satellite Image of 10 Oct 2023



Observations from  
Satellite image  
after flood event

- A) Minimal water flow is observed in the river as on 10 Oct 2023 after the breach of Chungthang Dam
- B) Damage to the Road / Village infrastructure and settlements is observed on 10 Oct 2023
- C) Embankment / Retaining wall near the Dam disappear after the flood event as seen on 10 Oct 2023
- D) Change in structure is observed after the flood event on 10 Oct 2023