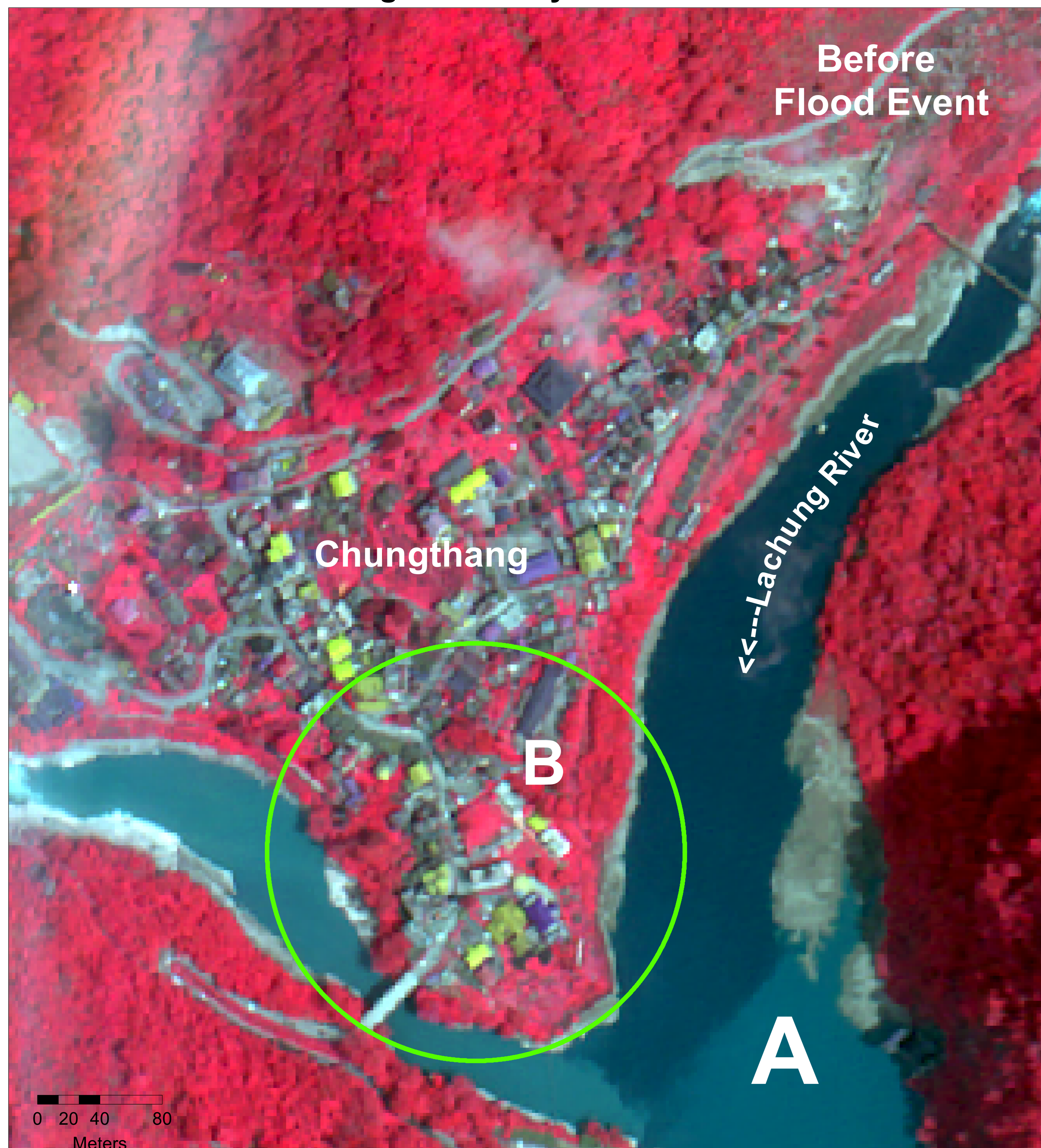


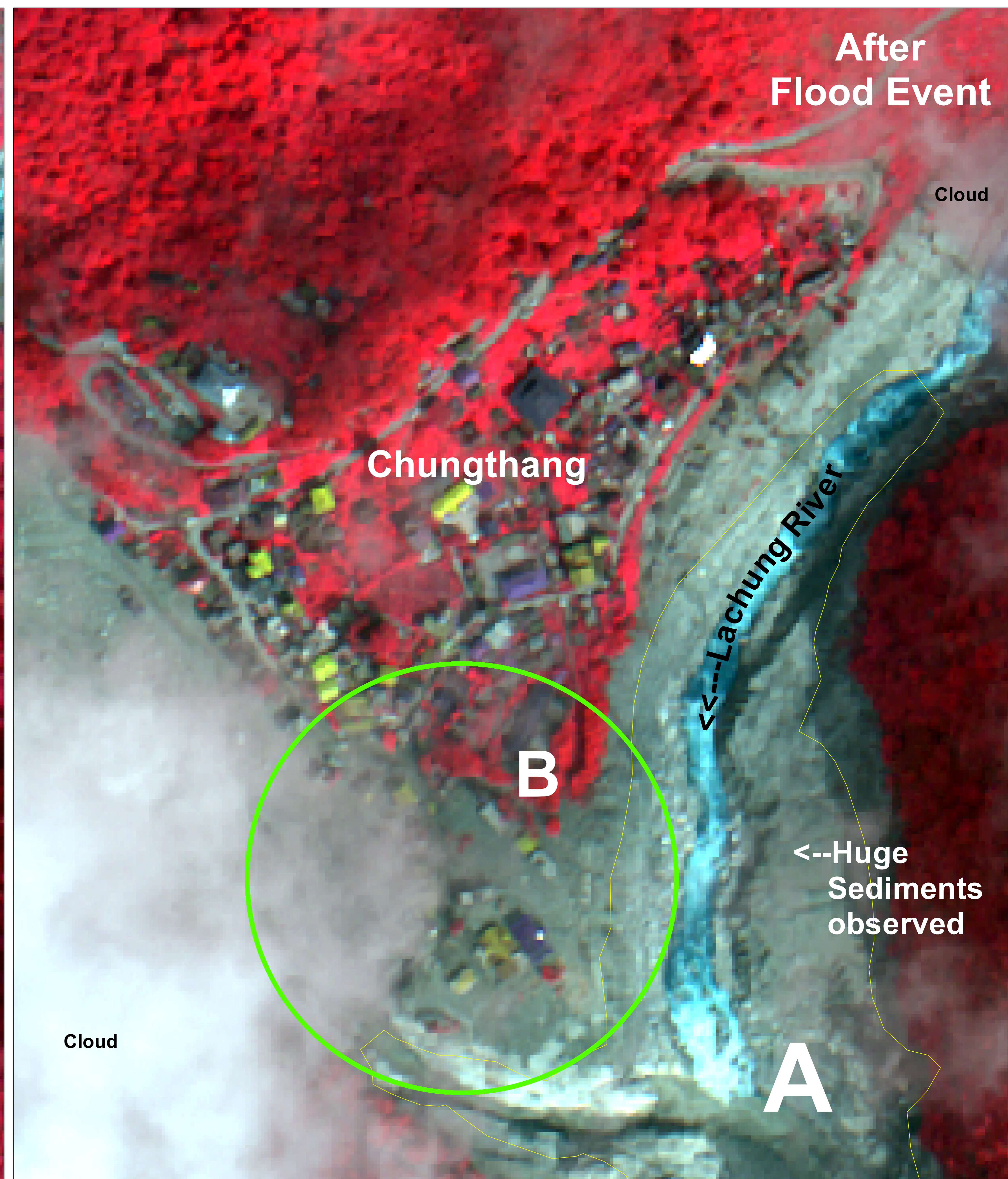
Chungthang Dam and Surroundings

Upstream of Chungthang Dam

Cartosat-2E Satellite Image of 10 May 2023



Cartosat-2E Satellite Image of 10 Oct 2023



Observations from
Satellite image
after flood event



- A) Minimal water flow is observed in the river as on 10 Oct 2023 after the breach of Chungthang Dam
B) Damage to the Road / Village / Urban infrastructure and settlements is observed on 10 Oct 2023