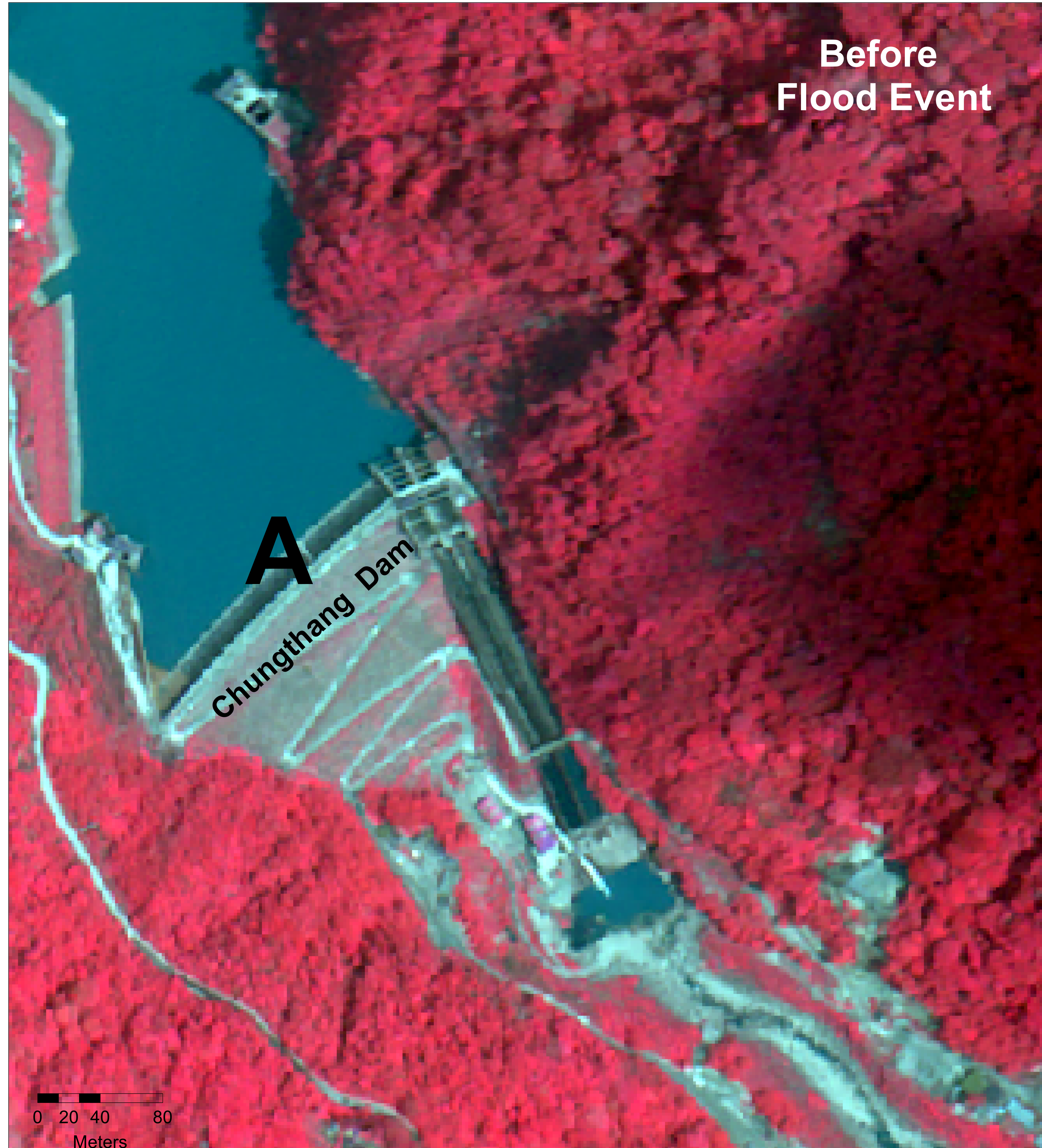


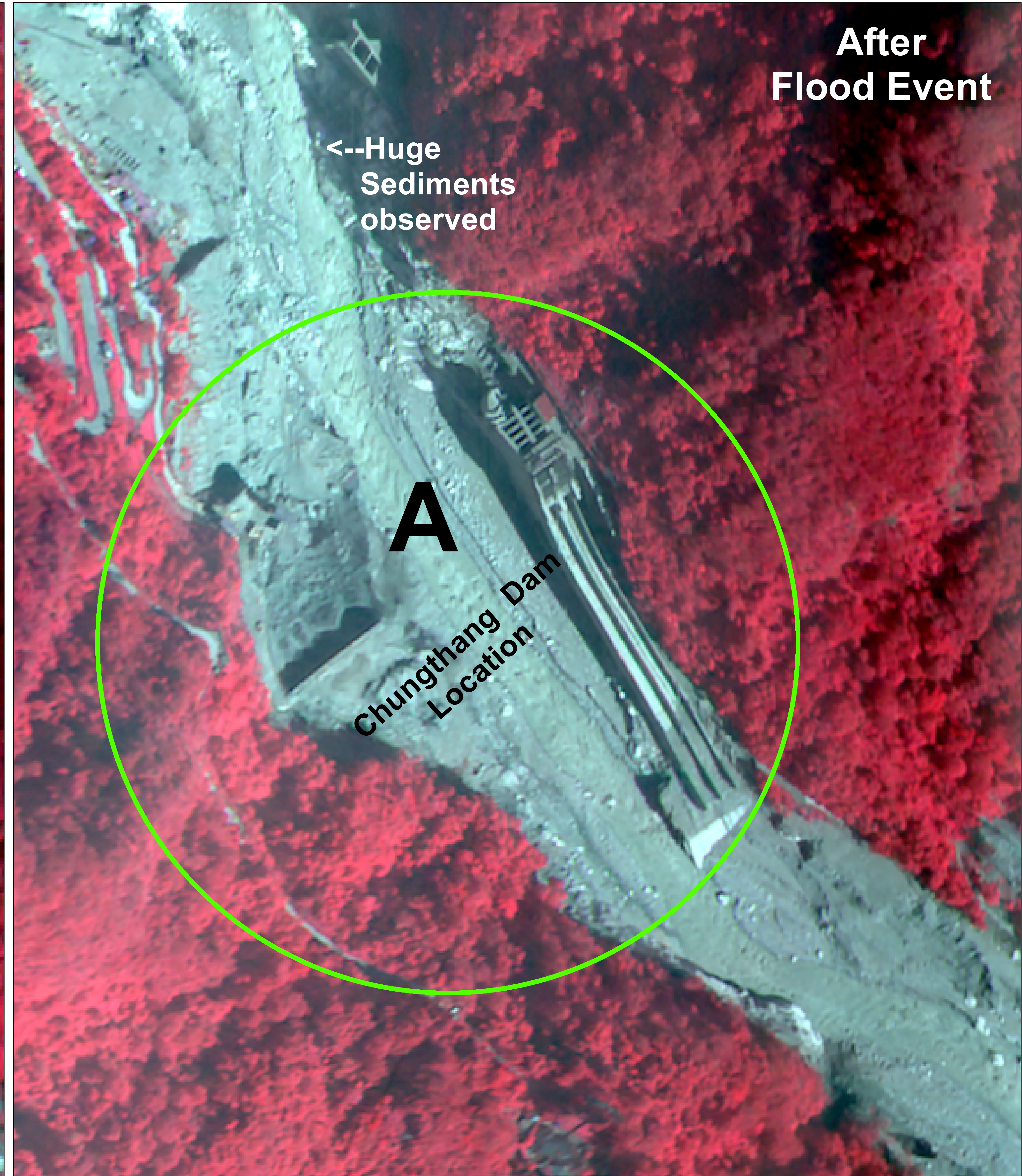
Chungthang Dam Location

Satellite Image as on 13 Oct 2023

Cartosat-2E Satellite Image of 10 May 2023



Cartosat-3 Satellite Image of 13 Oct 2023



Observations from
Satellite image
after flood event

- 1) Collapse of Chungthang Dam is seen clearly at point A.
- 2) Lot of sediments are observed in the upstream and downstream of the dam and surroundings.
- 3) Road network and infrastructure downstream appears to be completely damaged and river channel is filled with sediments and channel is widened after the flood event.