

Chungthang Dam Surroundings

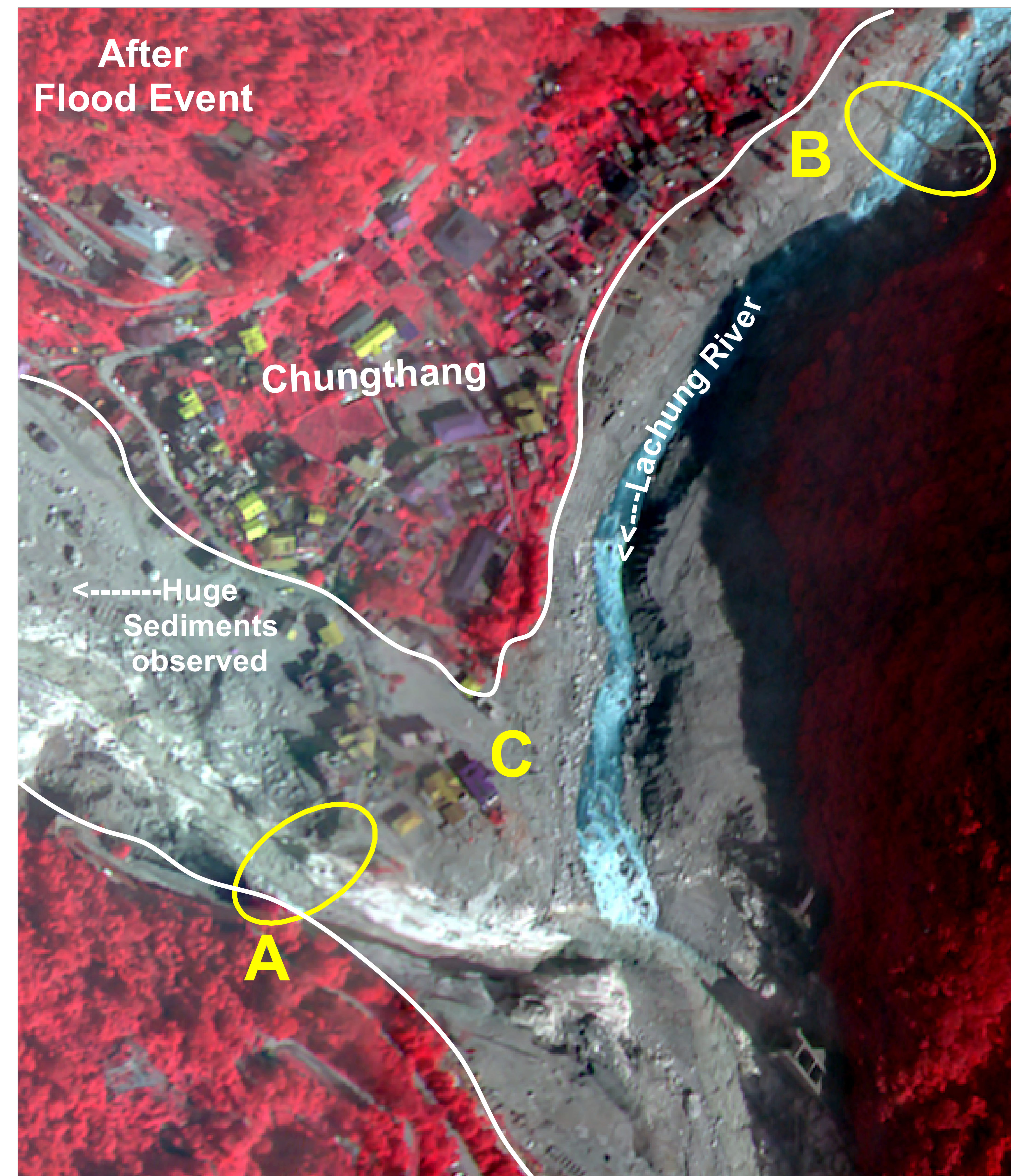
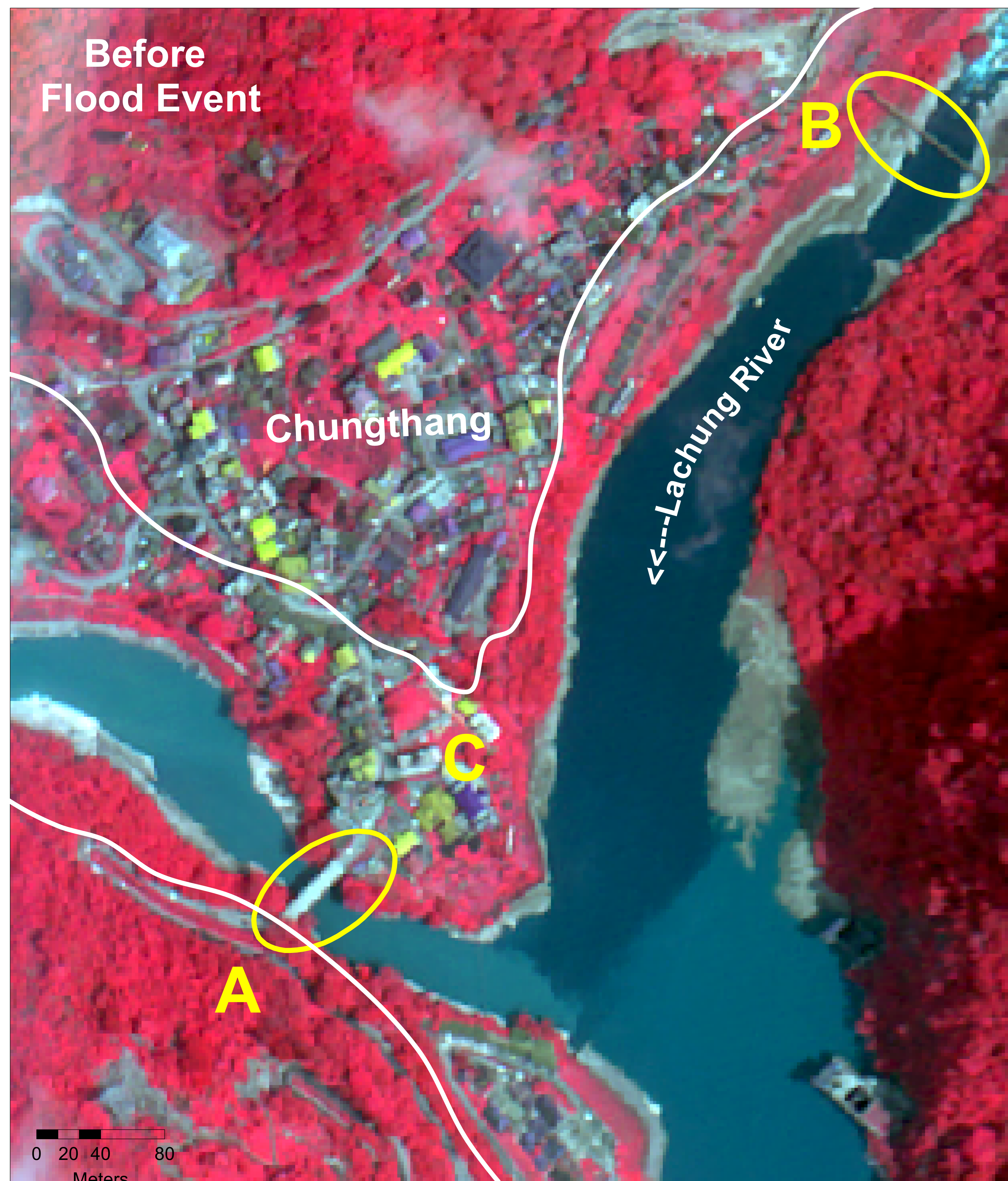
Satellite Image over Chungthang Village as on 13 Oct 2023

ID: 2023/FL/SIK/17-VAP/13102023

Date of Issue: 13.10.2023

Cartosat-2E Satellite Image of 10 May 2023

Cartosat-3 Satellite Image of 13 Oct 2023



Observations from
Satellite image
after flood event

- 1) Point A depicts the Collapse of bridges on Gangtok-Chungthang Road (North Sikkim Highway) in the upstream of Chungthang Dam
- 2) Point B depicts collapse of bridge on Lachung River
- 3) Point C depicts the deposition of huge sediments in settlement areas and along the river reach

Disaster Management Support Group
National Remote Sensing Centre, ISRO
Dept. of Space, Govt. of India
Hyderabad- 500 037
E-Mail: flood@nrsc.gov.in
www.nrsc.gov.in