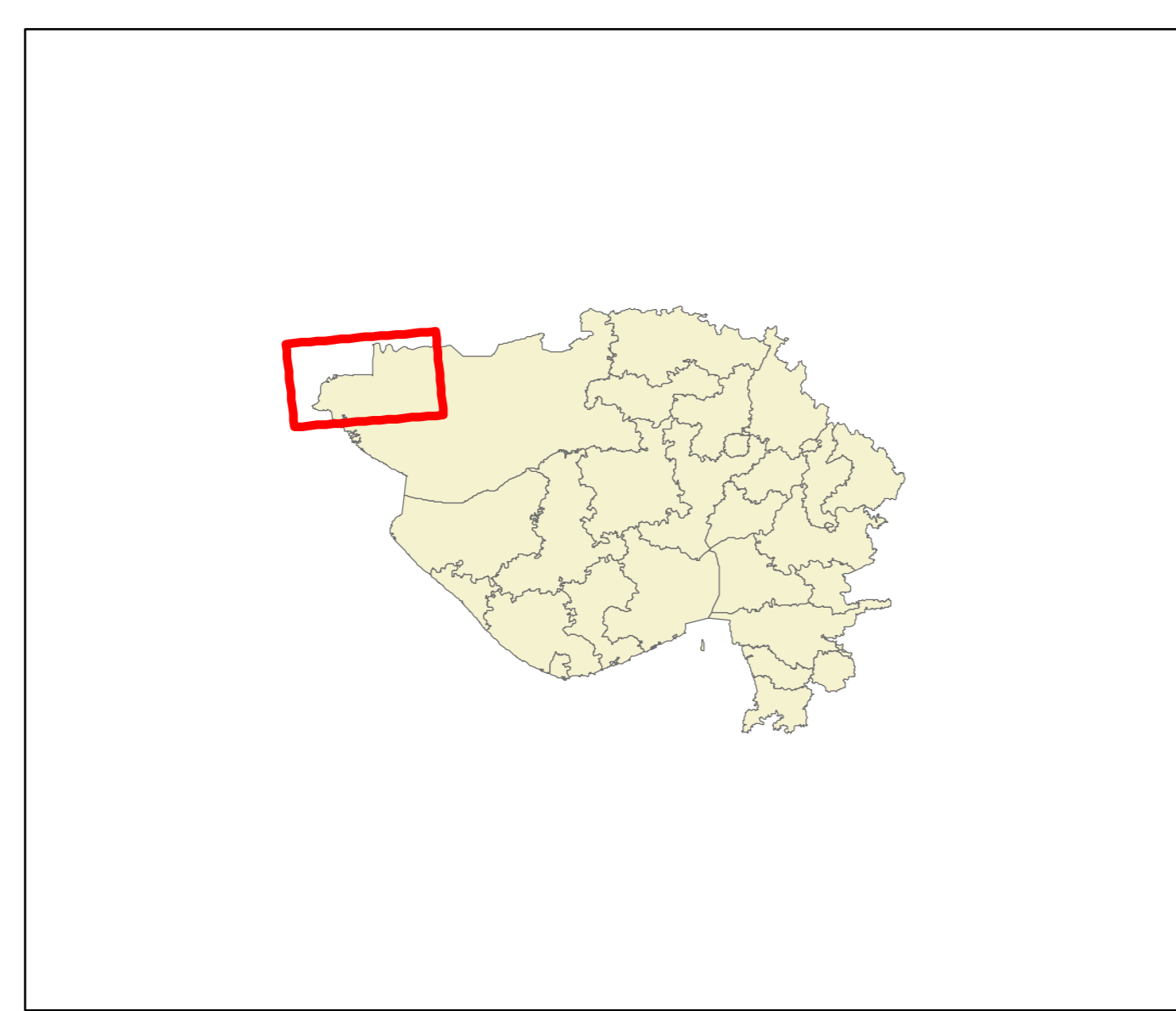
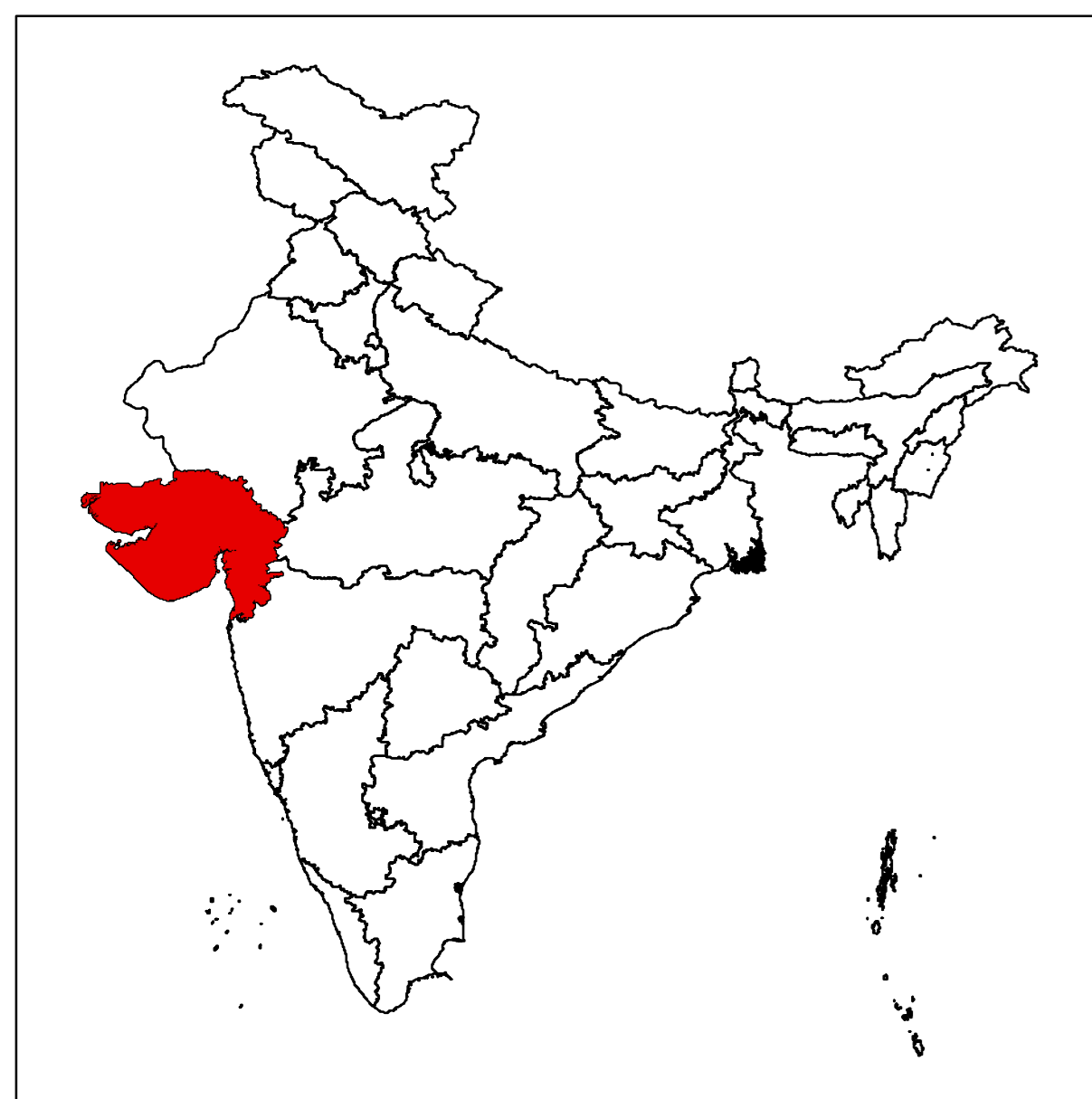
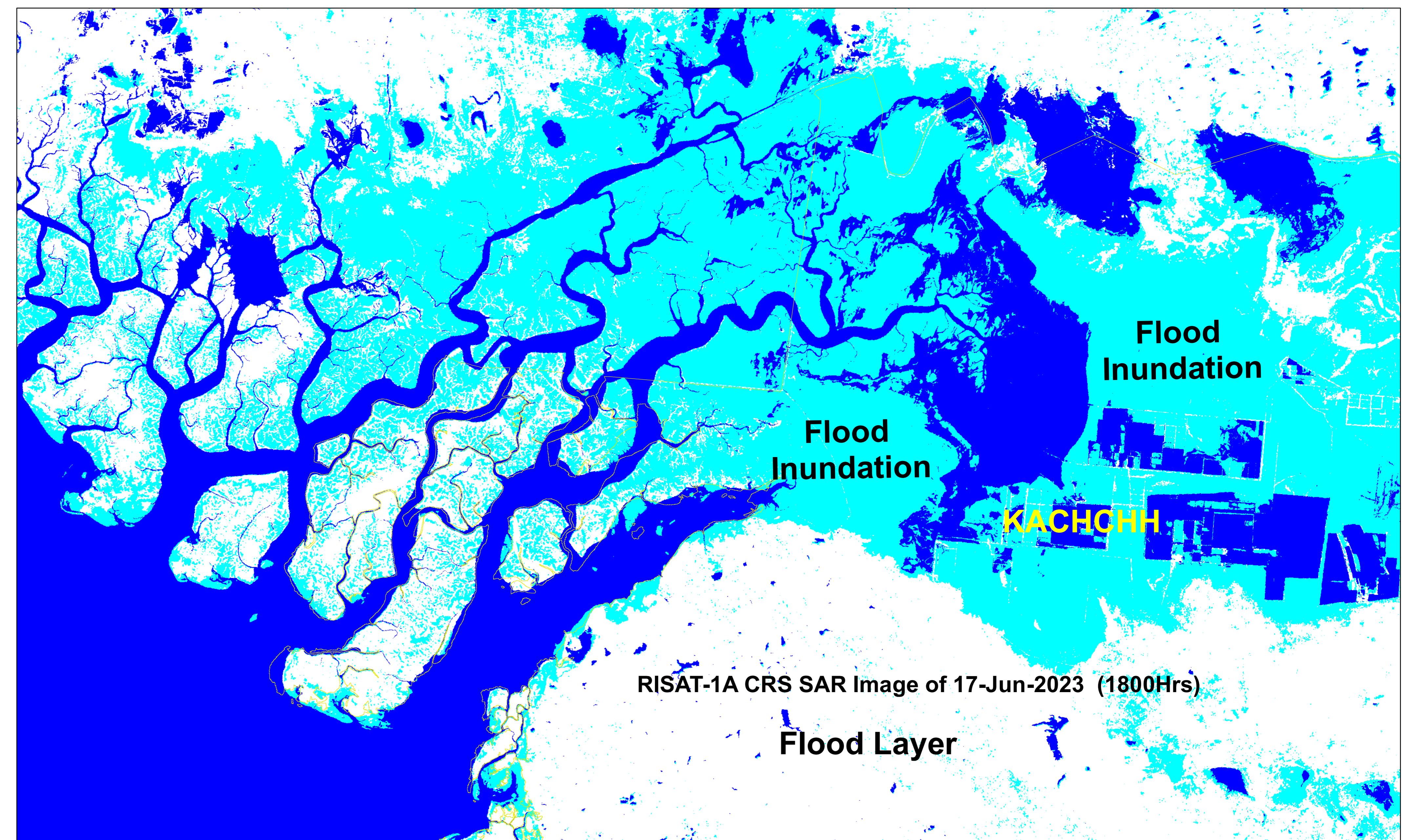
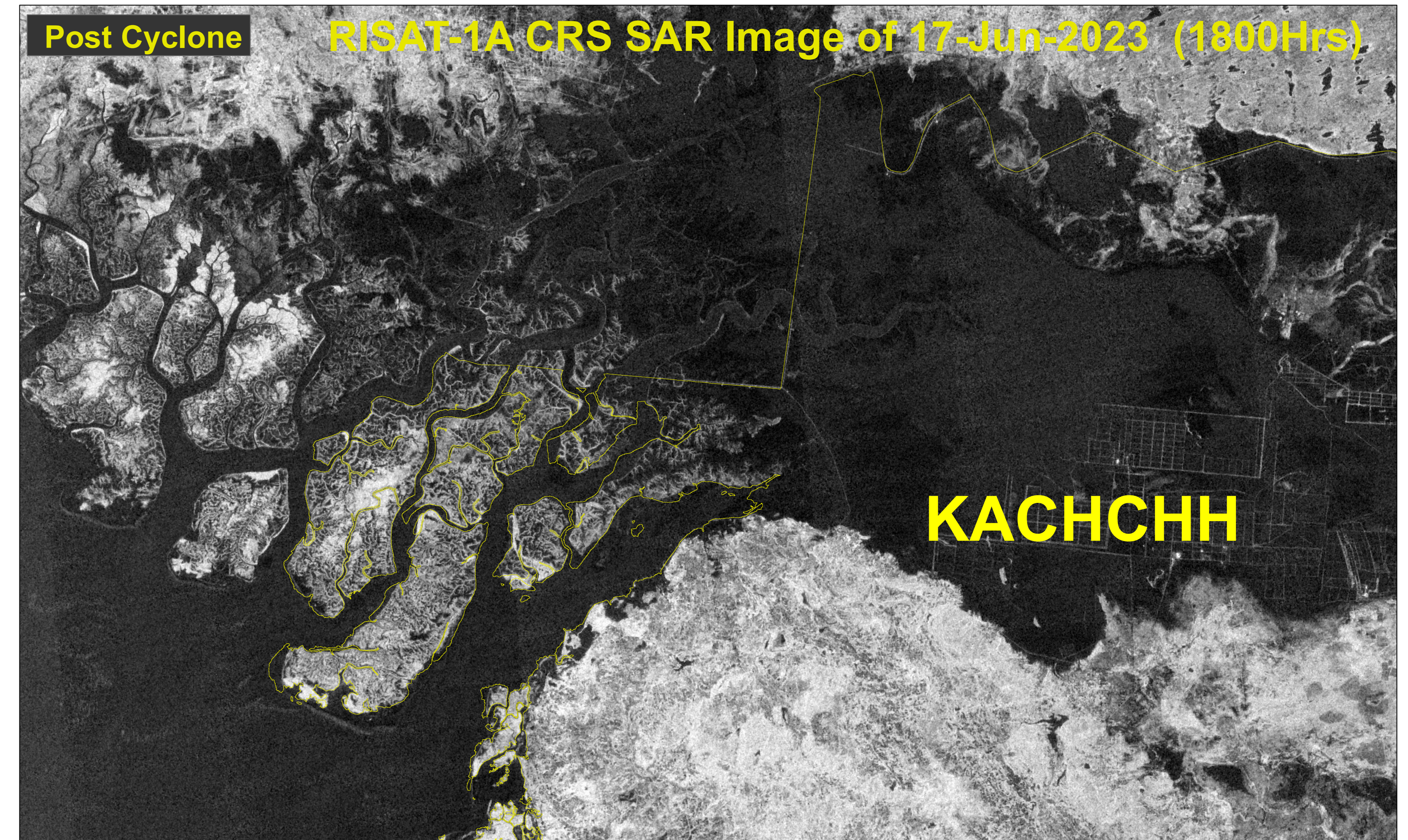

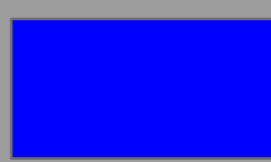
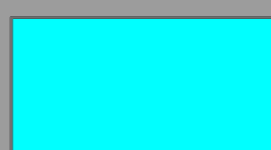
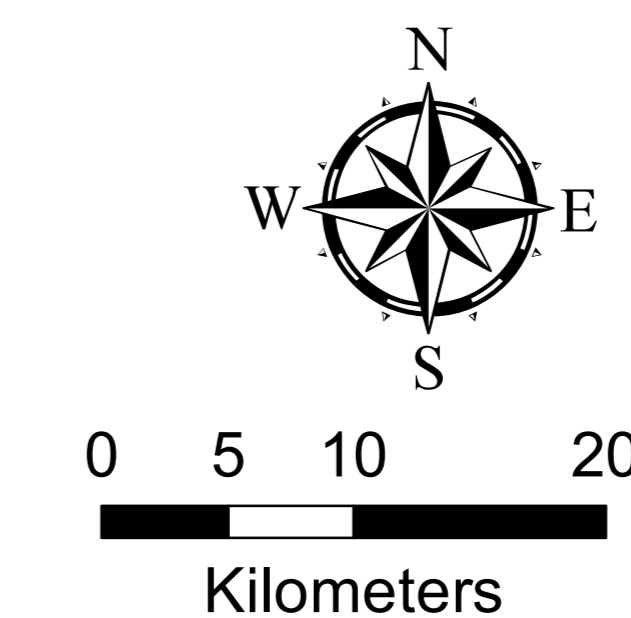


View of Flood Inundation Surrounding Kachchh Area, Gujarat State during Biparjoy Cyclone (Pre and Post Scenario of Water Stagnation/ Sea Water Surge)



Legend

-  District Boundary
-  River/ Water Body (Pre Cyclone)
-  Flood Inundation/ Sea Water Surge



RRES
National Remote Sensing Centre, ISRO
Dept. of Space, Govt. of India
Hyderabad- 500 037
E-Mail: flood@nrsc.gov.in
www.nrsc.gov.in