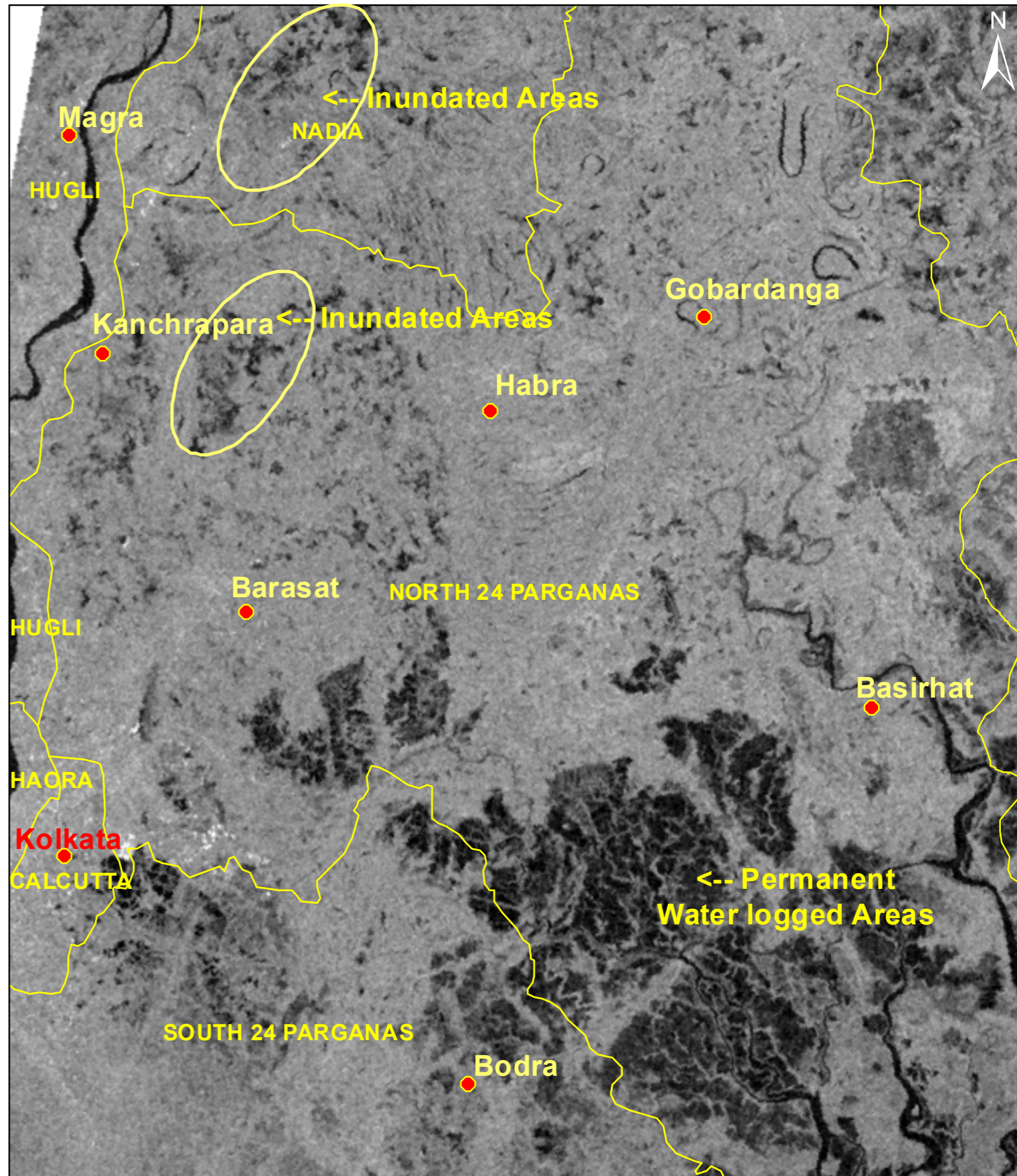
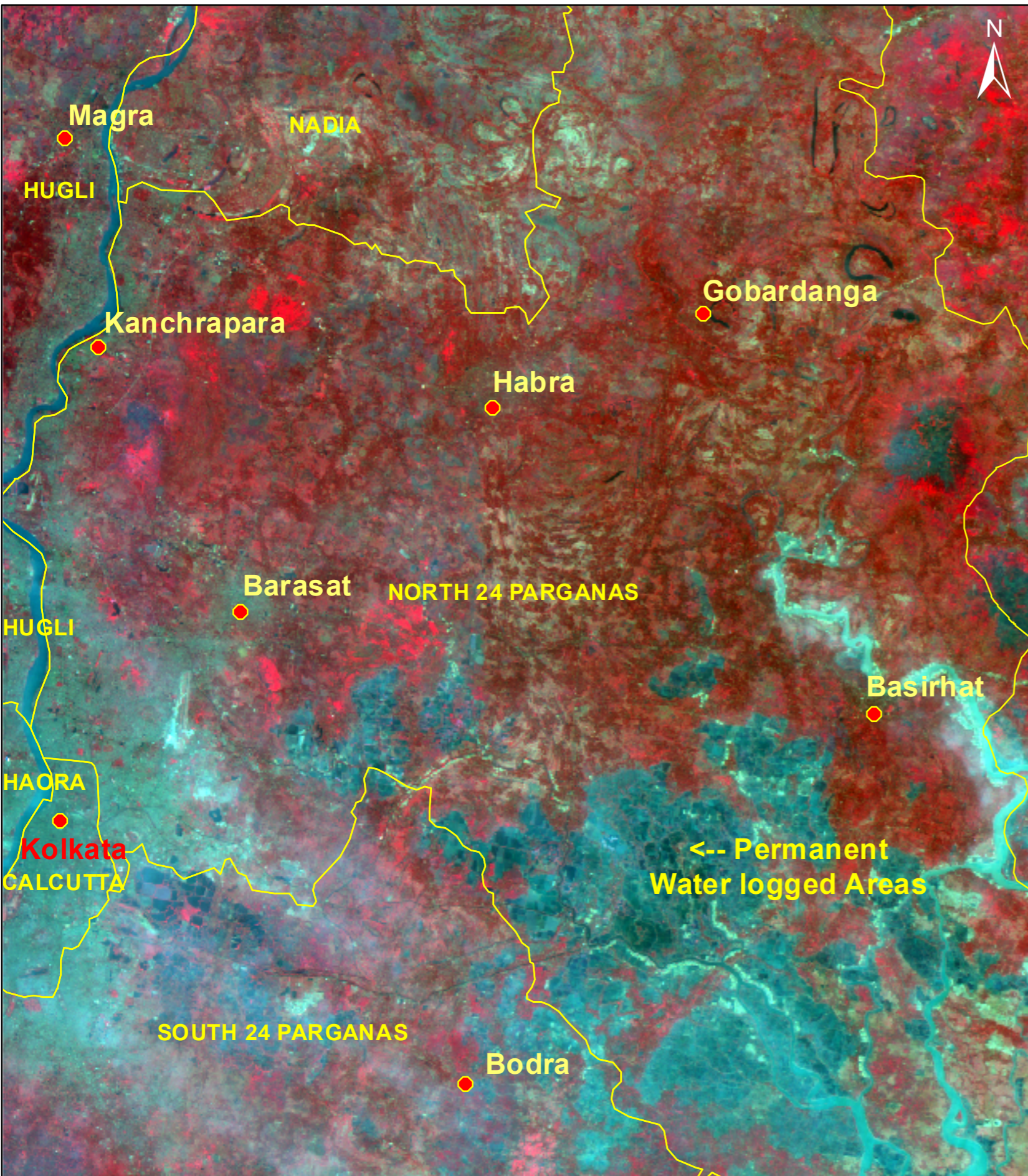


Cyclone "AMPHAN" Affected Areas in Part of West Bengal State

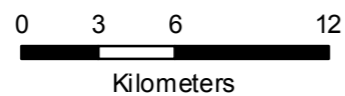
Pre-Cyclone (01-Mar-2020) Image of Resourcesat-2 AWiFS

Post-Cyclone (21-May-2020) Image of RADARSAT-2 SAR



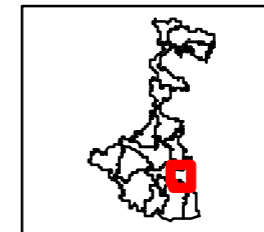
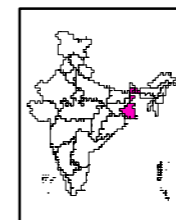
Legend

- Settlements
- District Boundary



Note: When publishing this map as part of any report, source may be indicated as " NRSC (2020) - Cyclone affected areas in Part of West Bengal State (as on 21 May 2020)" dated 21.05.2020
DSC/NDEM Map no : 2020/01, NRSC/ISRO, Hyderabad

Location Map



DSC / NDEM
National Remote Sensing Centre, ISRO
Dept. of Space, Govt. of India
Hyderabad- 500 037
E-Mail: flood@nrsc.gov.in
www.nrsc.gov.in