

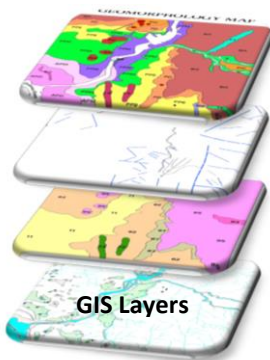
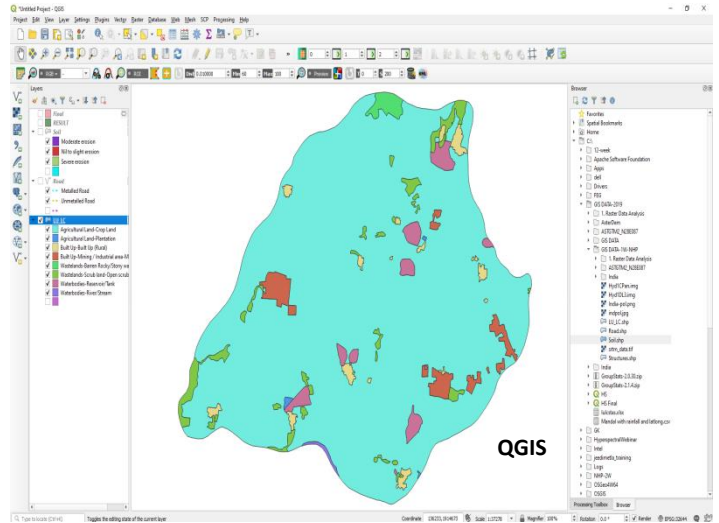


5 Day Training Course on Introduction to Open Source GIS (April 21 - 25, 2025)



Brief:

Geographic Information System (GIS) is a technological tool used to describe and characterize spatially referenced geographic information for the purpose of visualizing, querying and analysis. Using GIS, it is possible to map, query, model and analyze spatial data maintained across multiple geo-database files. Spatial data analytical techniques is one of the most inherent, interesting and remarkable aspects of GIS. Using spatial analysis, GIS users can combine data from many independent sources and derive entirely new layers of information by applying sophisticated set of mathematical, statistical, imagery and graphical tools.



Spatial information technology has emerged as a powerful platform in providing various geospatial solutions in utility planning, large scale mapping, integrated studies, spatial prediction models & Governance applications. GIS analysts are working with spatial decision support system and Geostatistics to identify and solve complex spatio-temporal problems. The primary aim of this training program is to give the participants introductory knowledge of GIS and providing practical exposure on use of open source GIS tools.

Training Focus

Training course imparts the foundations of GIS, viz., introduction, spatial data models and databases, data conversion techniques such as data capture & editing, spatial analysis and modeling, web GIS & and few examples on GIS applications. The course includes hands-on exposure in the form of Demonstrations using QGIS software package. The program is intended to serve 1) working level people who wish to acquire basic working level technical knowledge to support the usage of GIS in their application domain and 2) academic people who are new to GIS and wish to use GIS in their research work.



Eligibility & Selection

Users having Master's in Science or Bachelor's degree in Engineering or Graduation. Research Scholars doing research applying GIS in their projects and Professionals planning to use GIS based tools for

developing solutions can also apply. Selection of candidates is subject to fulfillment of eligibility criteria, current utilization, scope of work in the domain and prior exposure to remote sensing tools will be considered.

Who can apply?

Duly filled applications form with sponsorship certificate are invited from working professionals of State Government / Central Government Departments, NGOs, Private Companies and Faculty/Research Scholars from Academic Institutions who are gearing up to utilize GIS for their Research/Study. The application form should reach NRSC, Hyderabad by speed post (EMS) by March 28, 2025. Interested applicants can send a scanned copy of the application form to training@nrsc.gov.in (attachment < 4 MB) along with tuition fee payment details as advance copy and duly send the originals by speed post to reach the address mentioned below before the due date.

Course Fee & Admission

The course tuition fee given in below table to be paid by Electronic Bank Transfer to NRSC account. Visit our website for more details. Tuition fee does not include lodging & boarding charges. Kindly enclose and send duly filled application form with sponsorship certificate should reach us on or before the due date. Selected candidates will be intimated by email/mobile. Applicants will be provided accommodation in NRSC Guest House II inside the campus and food is served by NRSC canteen at a nominal price. *Right of admission reserved with NRSC.*

| Course fee (Rs.) for individual applicants | |
|--|---|
| Central Govt./State Govt./PSUs/Pure Govt. Organizations/Govt. Academic Colleges/Institutes | Industry/Autonomous Bodies & its Institutes, Private Orgn./NGOs/Private Academia/Other Institutes)* |
| Rs. 9,500/- | Rs. 11,210/- |

*Course Fee Rs. 9,500/- + 18% GST.

Postal Address & Contact:

Head, TPCD
Training Education & Outreach Group,
National Remote Sensing Centre
Indian Space Research Organisation
Dept. of Space, Govt. of India
Opp. Shapur Nagar Substation
IDA Jeedimetla
Hyderabad-500 055
Ph: 040 - 2388 4566, 4567, 4458
Email: training@nrsc.gov.in